

MAXFLOW EQUIPMENTS



FEATURES

- ◆ Pumps for Safety
- ◆ Seal Less Design
- ◆ Light Weight, Portable Use
- ◆ Modular Design Construction for Easy Maintenance
- ◆ Drive Motors are Interchangeable
- ◆ Saves Considerable Time, Labour, Spillage
- ◆ High Quality Reliable Performance for Handling Aggressive, Corrosive & Flammable Liquids.

Industrial Drum Pumps & Stirrer



Stainless Steel Barrel Pump

Material Of Construction :

All wetted parts like pumping chamber, pump base, discharge tee, nozzle, wing nut and impeller are made of SS 316 (CF8M), SS 304 (CF8) Investment Castings. The outer & inner pipes are seamless type made of SS-316, SS 304. Shaft is made of SS-316 bright bar. Guide Sleeve and lip seals are made of Teflon.

Drive : Pumps Available with Pneumatic / Flameproof / Non Flameproof Motor & also Available with Regulating System.

Application :

Solvents, Gasoline Light Lubricant Oil, Alcohols etc.

Operating Data :

Capacity Upto 110 LPM at Open Discharge. Head Upto 21 mtrs

Viscosity : Upto 350 Cp.



Polypropylene (PP) Barrel Pump

Material Of Construction :

All wetted parts like pumping chamber, pump base, discharge tee, nozzle, wing nut and Impeller are made of Molded Polypropylene, Outer & Inner pipes are made of Polypropylene, Shaft is made of Hastalloy-C or, SS-316 also available. Guide sleeve and lip seals are made of PTFE & Impeller Available in ETFE/PVDF (If required)

Drive : Pumps Available with Pneumatic / Flameproof / Non Flameproof Motor & also Available with Regulating System.

Application :

Acids Like Hydrochloric Acid, Dilute H₂SO₄, NaOH Formic Acid etc.

Operating Data :

Capacity upto 110 LPM at open discharge. Head upto 25 mtrs

Viscosity : Upto 350 Cp.



PTFE Barrel Pump

Material Of Construction :

All wetted parts like pumping chamber, pump base, discharge tee, nozzle, wing nut, impeller are made of PTFE, Outer & Inner pipes & Guide sleeve are made of Teflon, Shaft is made of Hastalloy-C. Impeller is made of ETFE (Moulding grade of Teflon)

Drive : Pumps Available with Pneumatic / Flameproof / Non Flameproof Motor & also Available with Regulating System.

Application :

Concentrated Acids, Aggressive Alkalies, Flammable Liquids, Thionyl Chlorides, Water Treatment Chemicals & Other.

Operating Data :

Capacity Upto 1 10 LPM at Open Discharge. Head Upto 21 mtrs

Viscosity : Upto 350 Cp.



PVDF Barrel Pump

Material Of Construction :

All wetted parts like pumping chamber, pump base, discharge tee, nozzle, wing nut, impeller are made of Injection Moulded PVDF, Outer & inner pipes are made of PVDF. Shaft is made of Hastalloy-C. Guide sleeve and lip seals are made of PTFE. Impeller available in ETFE/PVDF.

Drive : Pumps Available with Pneumatic / Flameproof / Non Flameproof Motor & also Available with Regulating System.

Application :

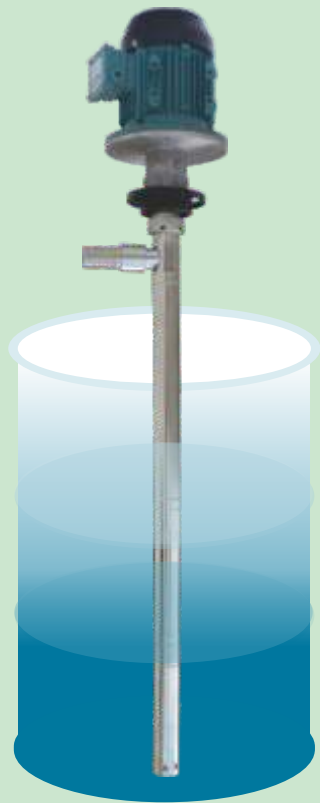
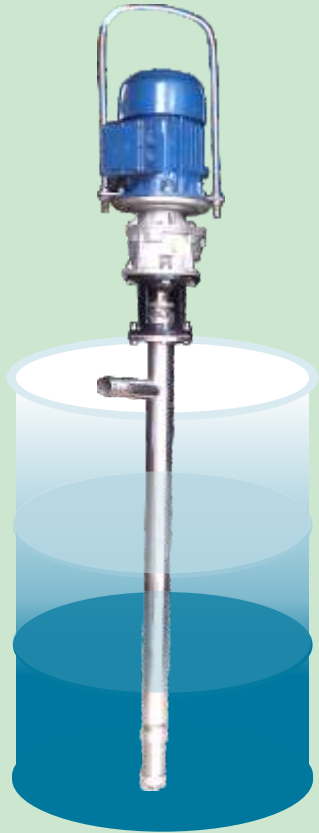
Highly Concentrated Acids and Alkalies, Bromic Acid, Hydrobromic Acid, Chloroform, Dimethyl Phthalate, Hydrofluroric Acid, Phosphoric Acid (95%) Nitric Acid and Others.

Operating Data :

Capacity Upto 1 10 LPM at Open Discharge. Head Upto 21 mtrs

Viscosity : Upto 350 Cp.





High & Low Viscous Drum Pump

The High Viscous Liquids Transfer from 200 Ltrs Barrel is a difficult task. High Viscous Drum Pumps allow for efficient transfer of solutions from Containers, Drums, and even Carboys.

Maxflow SC Series Pumps, designed for pumping all thick and viscous liquids that will flow continuously and contain no abrasive particles, achieves a maximum output of 20-25 Kgs / Min at free outlet and a discharge. pressure up to 3 Bar. Flow rates are in proportion to the motor revolution (RPM) & Viscosity of the liquid.

All models are powered by Continuous Duty Electrical AC Motors. The different types of interchangeable Motors with three phase A.C. Electrical Motor is available for all thick and viscous liquids of approx. 500 cp and up to 6000 cps. It is not only the viscosity, but also the flowing capability of the liquid which is important. This means, a highly viscous liquid with a good flowing capability can be similar to low-viscous liquid with less flowing capacity.

This High Viscosity Liquid Pump is especially suitable for viscous liquids such as Liquid Soap, Plastic Solutions, Synthetic Resin, Glues, Molasses, Syrups, Liquid Chocolate, Glucose, Honey, Glycerin etc.

Specification

Motor	:	Electric 440 V / 3 Phase / TEFC / 2880 RPM or 1440 RPM
Pump Capacity	:	20 -25 Kgs / Min
Material of Construction	:	SS 316
Mounting	:	Vertical Mounting
Pump Tube OD	:	MS Drum : 54 MM
HDPE Drum	:	44 MM
Suction Length	:	1000 MM Long
Pump Discharge Size	:	40 OR 50 MM
Duty Rated	:	Continuous
Pump Weight	:	40 Kgs & 15 Kgs

Motor Options

- ◆ ON – OFF switch for 3 Phase Motors
- ◆ Toggle switch for Single Phase Motors
- ◆ Explosion Proof, 50 HZ, with ON-OFF Push Button.

Application Industries

- ◆ Pharmaceutical Industries
- ◆ Paint Industries
- ◆ Lubricating Oil Industries
- ◆ Resins & Ink Industries
- ◆ Chemical Industries
- ◆ Adhesive Industries

Drum Stirring of Chemical Raw Material / Lubricating Oil Additives where sedimentation occurs due to specific gravity variation of ingredients is a difficult task. The limitation being the drum bung opening. The universal drum opening is 54 MM for MS Drum and 44 MM for HDPE Drum.

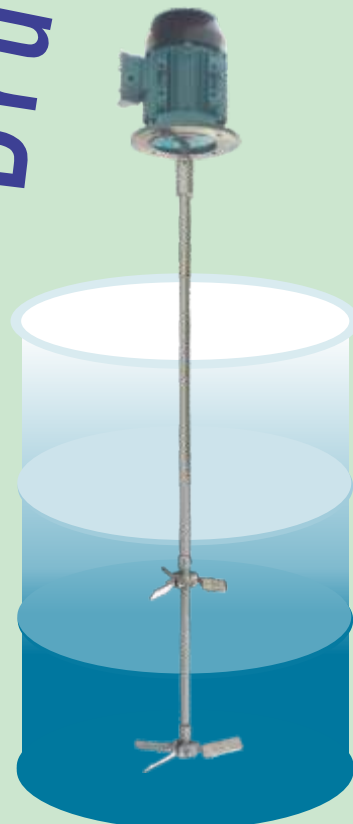
The propeller diameter of conventional stirrers are too big to be inserted through a bung opening which forces the user to opt for either manual stirring or cut open the barrel to enable the conventional stirrer to be inserted, which makes it cumbersome and time consuming. Drum Stirrers in a light weight, portable and continuous duty rated allows quick blending without removing the drum lid. The Drum Stirrer Assembly incorporates a threaded stainless steel nipple to allow mounting on the opening of drums.

Our unique bridge design with foldable propeller with detachable drive motor allows for simple drum stirring. Lid mounting with large folding propellers and heavy duty drives are combined to provide uniform blending. No "dead spots" or settled out material is ensured regardless of viscosity or solid content.

Models are also available with fixed blades to handle light water-like solutions to liquids with viscosities up to 12,000 cps.

All models are powered by either Continuous Duty Electrical AC Motors or Heavy Duty Air Motors.

Drum Stirrer



Specification

Motor	:	Electric 440 V/ 3 Phase / TEFC or Pneumatic Drive Motors
Output Speed	:	1440 RPM (Nominal)
Shaft	:	½" or ¾" Diameter x 900mm Long
Material	:	All wetted components are SS 316
Mounting	:	MS Fabricated Mounting Stand or 2" BSP SS Nipple
Propeller Diameter	:	4" (Open)
Duty Rated	:	Continuous

Motor Options

- ◆ ON – OFF switch for 3 Phase Motors.
- ◆ Toggle switch for Single Phase Motors.
- ◆ Explosion Proof, 50-HZ, with ON-OFF Push Button.
- ◆ Available Air Lubrication Set with Air Filter, Regulator, Lubricator for Pneumatic Driven Models

Application Industries

- ◆ Paint Industries
- ◆ Lubricating Oil Industries
- ◆ Flavours & Fragrance Industries
- ◆ Agarbathi & Dhoop Industries
- ◆ Adhesives



Motorised Screw Barrel Pump

PUMP MODEL : MFP/SR/1000 Ex



Insure Physical Safety :

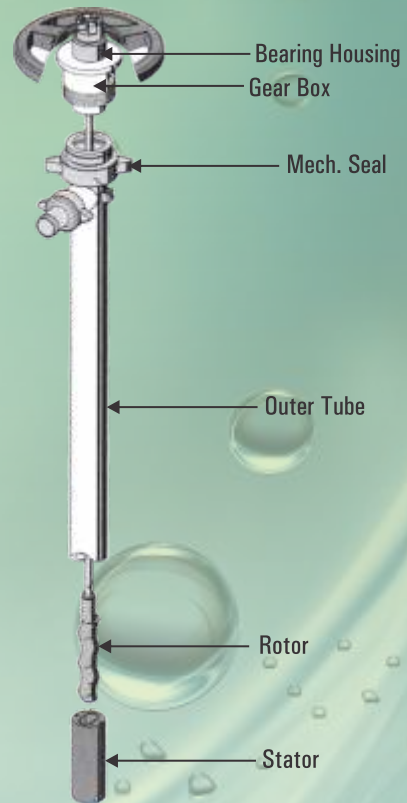
The Pumps are Mainly used in the Food, Cosmetics, Chemicals, Agro Chemicals Pharmaceuticals and Paint Industry.

Material of Constuction

Housing	:	Stainless Steel
Stator	:	NBR/EPDM/VITON/HYPALON
Rotor	:	Stainless Steel
Mechanical Seal	:	CARBON/SIC with PTFE Elastomers
Drive Shaft	:	SS 316 Bright Bar

Features

Flow Rate	:	Upto 10 lpm
Dis. Pressure	:	Upto 3 Bar
Temp.	:	120°C Max
Tube Diameter	:	54 mm
Viscosity	:	Upto 40000 CPS.
Length	:	1000 mm



Barrel Mixing Pump

Various liquids, which are processed in industry and trade, are emulsions, dispersions or suspensions. These liquids have to be mixed and homogenised prior to further processing.

To Avoid Problem of Stirring the Liquid in a 200 ltr Bunghole Drum Where Container Opening is Very Small for a Normal Stirrer.

There we can give this mixing Pump. It can Mix & Pump at the Same time Without any Help. This double-acting pump mixes liquids without shifting Them before feeding them to the processing area. Flammable as well as non-flammable liquids can be handled in a very easy way with This MAXFLOW Pump.

These pumps can be used for complete transfer systems also.



The ideal solution for container emptying

- These Barrel can be used as container pump as vertical, submersible centrifugal pump, which is driven by a standard single-phase motor.
- These pumps have been designed in such a way that it can be fitted into the container easily.
- The drive output has been chosen in such a way that liquids up to a density of 1.8 kg/dm³ can be pumped.
- The materials can be used in almost all application.

THE PUMP IS FOR INTERMITTENT USE ONLY



ACCESSORIES



Strainer :
To Prevent Foreign Particles inside Pump

Wall Bracket :
Wall bracket Used when pump is not in Use, to Storing the pump in vertical position, that will Increased the pump life and protect the pump From damage and deformation.



Barrel Adaptor :
51 mm O.D. (2")
Material of Construction Stainless Steel and Polypropylene

Flow Meters :
Industrial Grade Electronic Digital Flow Meters Durable, Compact, High Precision Fluid Measurement Systems. By Combining A Turbine, A Basic Flow Sensing Device With A Direct Mounted Microprocessor Based Computer. This Flow Meters Mounts at The Nozzle For Easy Reading. Compact and Light Weight at Just 1 To 1.5 Kgs in SS / PP / PVDF MOC.





Our Valuable Client



WARRANTEE CLAUSE : We stand guarantee only for the genuinity of SS 316 and PP/PVDF resin used in our pumps but do not stand guarantee for any kind of chemical, physical & toxicological effects on the same by the liquid handled with our pumps. Since the conditions of handling and use are beyond our control, we make no guarantee of results. We assume no liability for injuries, damages or penalties resulting from its use whether or not our recommendations are followed. Our recommendations are only on the basis of our past experience and should not be taken as guarantee.



MAXFLOW EQUIPMENTS

Cor. Office :
 506, Tirupati Tower, 4th Floor, G.I.D.C., Char Rasta, VAPI - 396 195. Gujarat.
 Telefax : 0260 - 2433253, 7096040970
 E-mail : info@barrelpumpsindia.com, maxflowequipments@gmail.com
 Website : www.barrelpumpsindia.com

Works :
 Plot No. L-1206/12, 3rd Phase, Near Industrial Boiler Unit-2,
 G.I.D.C., VAPI - 396 195. Gujarat.



As development is a continuous process any changes in specifications is made without notice